

ELK-M1 CONTROL RELEASE NOTES

June 15th 2026 - M1 Firmware 5.3.42 – UL Listed

1. Made change to allow the proper display of a zone trouble on the ELK-7TS for a 24hr zone.
2. Made a update to the API for Zone Status and Trouble Conditions to improve the information provided to third party applications.
3. Added Area Indicator for SIA Dialer Reporting Format.
4. Corrected an issue implemented in 5.3.36 that prevented a Normally Closed 24 Hour Zone from being used without a trouble condition.

Note: Please ensure that if you are utilizing the M1-XRF319 and M1-XRF2H, they have firmware version 2023.2.2 or newer. This is needed to utilize the new signal strength RSSI value. The M1-XRFTWM is compatible with all firmware versions. In the event you update your M1 to 5.3.18 and you have older firmware for your receiver, it will still function as intended for normal use. But, during a walk test with either 319MHz or 345MHz, the signal strength will indicate as 1. Ultimately, you will not be able to confidently walk test for signal strength testing without firmware 2023.2.2 in the M1-XRF319 or M1-XRF2H.

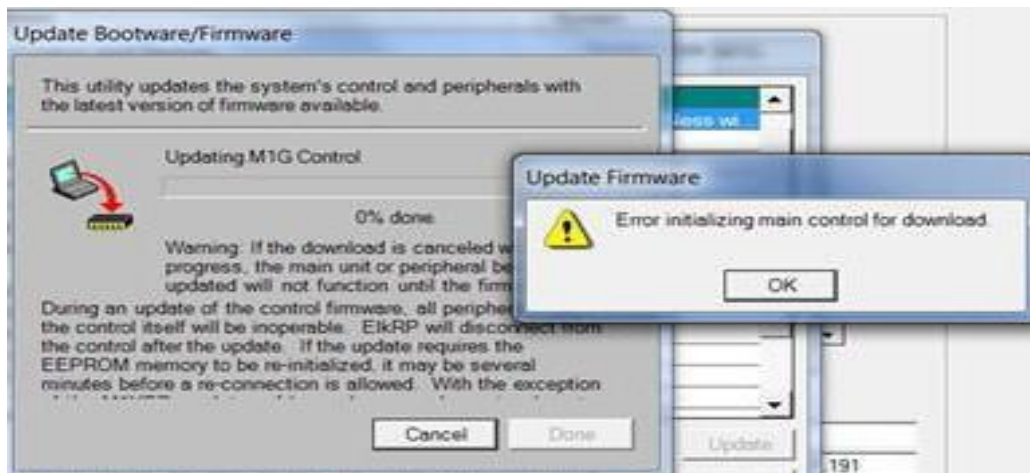
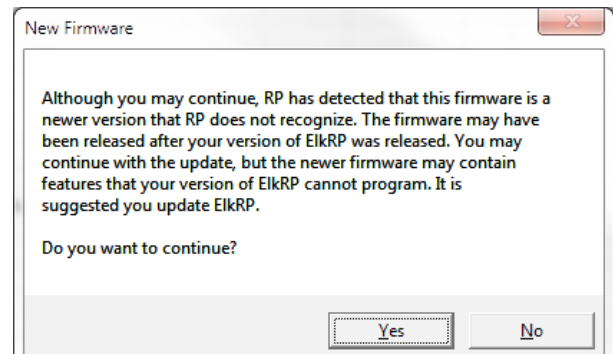
Please be aware that M1-XRF319 & M1-XRF2Hv2 firmware are not field updatable and require returning to ELK for updating.

SUNSET NOTIFICATION: Firmware versions LATER THAN 5.3.0 do not support the legacy M1XRF2G RF (GE format) Receiver. The newer M1XRFEG RF (GE Format) Receiver is still supported. We recommend you not update firmware if your M1 is equipped with a legacy M1XRF2G Receiver unless you are prepared and willing to replace it with the newer M1XRFEG Receiver.

ELK-M1 CONTROL RELEASE NOTES

ElkRP Software 2.0.41 or later is recommended with this firmware

This “New Firmware” message may appear upon connection if ElkRP does not recognize the new version of M1 firmware. There is no great need for concern. This is generally just a case where ElkRP has not yet been updated to reflect the newer M1 firmware version.



ElkRP versions 2.0.24 and beyond will not allow a bus module enrollment or flash memory update to be performed if any area is armed. To enroll or do a flash update it will be necessary to disarm all areas, do the enroll or flash update, then re-arm. This change was implemented in the interest of enhanced security. The warning or error message displayed will depend on the version of ElkRP that you are currently using.

To obtain the latest Update go to the Elk Products website: <http://www.elkproducts.com>

Updates are contained in self-extracting (zipped) format for all the controls and for each individual accessory. Scroll the available listings to locate the desired product download. Click on the update link and select the RUN option which will self-extract the files to the appropriate “Updates” directory on your computer.

NOTE: Control and peripheral Firmware update file(s) are separate from the Elk-RP software file.

ELK-M1 CONTROL RELEASE NOTES

Procedures for Updating Control Firmware

We strongly suggest reviewing update release notes and consider whether an update resolves issues important to you, or whether it simply adds new feature(s). In many cases the best decision may be to leave the control at its current version. If the decision is made to update, always use Elk RP2 to RECEIVE ALL and SAVE a permanent copy of the control's custom programming. After the update, reconnect and SEND ALL to restore the custom programming. With any update there is always a possibility that a glitch or failure could occur that would render the control unusable. We suggest having a spare board available in the rare case where a problem is encountered during/after the update.

1. Connect a 9 pin serial cable or USB to serial adapter from the Computer to the 9 Pin RS232 Connector on the M1 Control. If you happen to have a M1XEP Ethernet module installed on the control, it may also be used for updating. **Telephone Dial-up connections cannot be used to perform firmware updates.**
2. Using ElkRP, open the account belonging to this control and establish a connection from the Connection menu
3. Use the "Receive All" option from the Send/Rcv menu to retrieve the very latest copy of all the data stored in the control.
4. Save the account information.
5. Click on the "Send/Rcv" menu/icon along the top of the PC screen, then click either "Update or Verify Firmware" OR "Enroll/ Update Control and Devices"
6. On the next screen you must choose the device to be updated.
7. The Update screen will display the current Firmware, Hardware, and Bootware version, along with pull down selection to select the update file(s) that are available.
8. Choosing an update:
 - a. **Bootware Update:** This step may be skipped unless specifically required by the firmware update. Please refer to the release notes for the current update. Use the scroll arrow to select the Bootware file for this update. Based on the hardware revision there may be more than 1 file. Just make sure the file selected contains the word "BOOT" and the current (latest) version number. Select Update. Once the bootware update is complete you may proceed to the Firmware Update. The control may disconnect after the bootloader is finished. If so, just re-connect and continue on with the Firmware Update.
 - b. **Firmware Update:** Use the scroll arrow to select the appropriate Firmware file for this update. Based on the hardware revision there may be more than 1 file. Just make sure that the file selected contains the current (latest) version number.
9. Select Update. (In some instances the Update button may be labeled "Continue").
10. This will start your update process. When completed, please verify the firmware of your M1.

ELK-M1 CONTROL RELEASE NOTES

Considerations when Updating Control Firmware

Warning: Some firmware updates make the control default its EEPROM memory. This will ERASE all customer programming, CANCEL all bypasses, CLEAR enrolled data bus devices, and TURN OFF the chime mode. It is always recommended to use ElkRP to do a "Receive All" prior to updating and save a permanent copy. After the firmware has been updated it may be necessary to do the following:

1. Re-enroll all data bus devices. Perform a "Bus Module Enrollment"
2. Re-connect ElkRP and use the "Send All" command to restore the saved customer data.
3. Restore any necessary bypasses, re-arm if needed, and re-enable chime if desired.
4. Retest the entire system including the telephone and communication reporting.

When updating from certain older firmware versions a new version of Bootware may be needed. During the update process if the latest firmware does not appear in the drop-down box, or if the message "NOT COMPATIBLE" is displayed, this generally indicates the control needs to be updated with the latest bootware. Bootware provides essential input/output functions allowing the control to 'boot up' and operate in the absence of application firmware. Bootware update is a new experience for most people. Please read the following warnings. Once the bootware has been updated to version 3.3.2 (or later) it is NOT POSSIBLE to rollback to an earlier version. Earlier versions of application firmware (prior to ver. 4.5.4 and 5.1.4) will not operate with the bootware 3.3.2 (or later). Consider this carefully. Once the update is completed, there may be no going back!

IMPORTANT!

Control firmware versions beginning with "5" (i.e. 5.x.x) do not support the use of Caddx "NX" Network wireless receivers. Those receivers were only supported by firmware versions "4" (i.e. 4.x.x), and support /updates for version "4" officially ended July 16, 2012.

It is not possible to mix "NX" receivers with any ELK Receivers (M1XRFTW, M1XRFEG, M1XRF2H) on the same control.